

Jazzy Engineering Aux-in Accessory for 2005/06 Subaru WRX, Outback Sport & Impreza Radios Installation Instructions

First check that your package includes everything listed below for proper installation.

Package Contents:

- Aux-in Accessory Board
- 2" 14-wire ribbon cable (plugged into board)
- Silent CD
- This installation manual

Throughout this install, there are steps that require the use of tools.

Recommended tools and materials to obtain before installation are listed below:

- Philips head screwdriver
- Flat head screwdriver
- Magnetic pickup tool
- Flashlight
- Electrical Tape
- Towel or cotton shirt
- Zip ties (for securing cables)

Additional Recommended parts:

- Stereo patch cable (male to male 1/8" or 1/8" to RCA depending on install)
- Ground Loop Interrupt (GLI - recommended to eliminate alternator noise caused by car chargers & transformers)

DISCLAIMER: *This board is in no way approved by Subaru or Fuji Heavy Industries. There are no guarantees stated or implied that this accessory will not cause damage to you, your stereo or vehicle. This accessory may void the warranty on your factory stereo. The seller of this accessory cannot be held liable for damage the consumer does to the radio or vehicle from installation steps or use of the accessory. Installation steps outlined in this manual are for entertainment & hobby use only. For official recommendations on dismantling parts of your Vehicle, see your authorized Subaru dealer. Proceed at your own risk.*

REMOVE THE CDS

For the initial installation steps, it is not necessary to have the accessory board available. Set it aside in a safe place and then proceed to your vehicle with the recommended installation tools. Before you begin taking apart your car, **remove all the CDs from the radio** so that they won't move inside the radio while it's outside of the vehicle and cause a jam.

REMOVE FACTORY STEREO

To gain access to the stereo mounting screws, some of the interior trim must be removed first.

1. Remove the bezel around the shifter by lifting from the rear. Pull it up, dislodging the clips at the back and pull it out.
2. This will reveal the 2 screws at the base of the radio/HVAC panel. Unscrew those and remove the panel by pulling it out from the base.
3. Remove the 6 screws holding the radio in place.
4. Pull out the factory stereo, disconnect the plugs and remove it from the vehicle to install the accessory board.

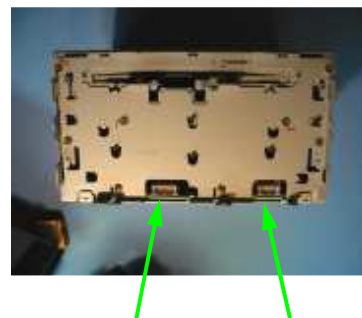
DISASSEMBLE FACTORY STEREO

Once the radio has been removed from the car, it can be disassembled to gain access to the components inside where the accessory board will be installed.

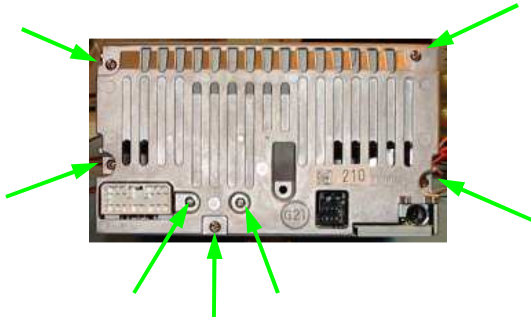
WARNING: *Internal components of the stereo are susceptible to electric shock. Accessing them without proper static protection equipment such as a grounding mat and wrist strap puts your radio at risk for irreversible damage.*

The first step in taking apart the stereo is to remove the mounting brackets on either side of the radio. Both brackets are held in place with 4 screws.

Next, remove the faceplate (front) of the radio. It is held on by 8 plastic tabs, two on each side. It seems to be easiest to start with one on the top or bottom and then move to the closest side to unsnap the next one. This can be kind of tricky. Also note that there are two electrical jacks between the faceplate and radio near the bottom of the faceplate - these just pull straight apart, but make it trickier to get the tabs off. Be careful not to break the clips with too much force.



Next, remove the heat sink located on the rear of the stereo. 7 screws hold it in place. Remove the heat sink by depressing the metal tab on each side of the radio and lifting it straight out.



After the heat sink is removed, remove the top lid of the radio by taking out the two screws holding it in place and pop it off by lifting at the pry points indicated on the radio.



Once the heatsink and faceplate have been removed, 2 screws are left holding the CD changer in place. They are in the middle of the radio face as indicated with arrows in the picture. Once these are removed, the CD changer should lift out fairly easily. It may be necessary to gently pull on the sides at the back to free the mounting clips of the changer.

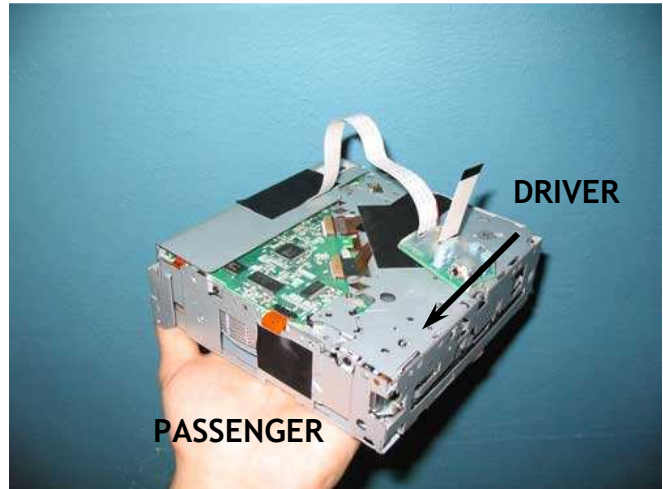
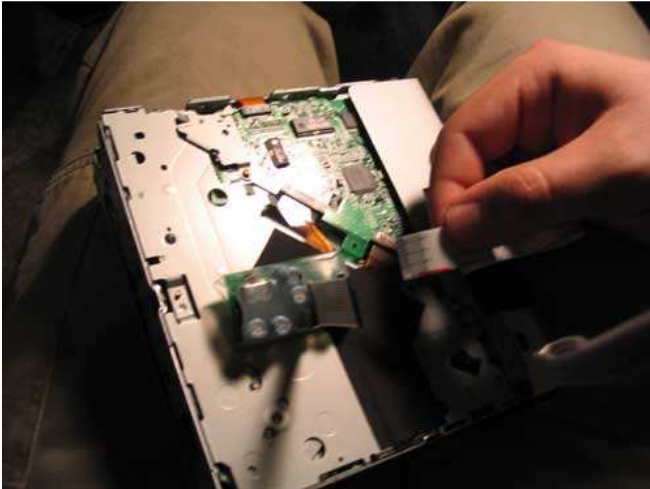


Before removing the CD changer completely, its ribbon cable needs to be disconnected from the radio. Gently pull it straight out from the connector.

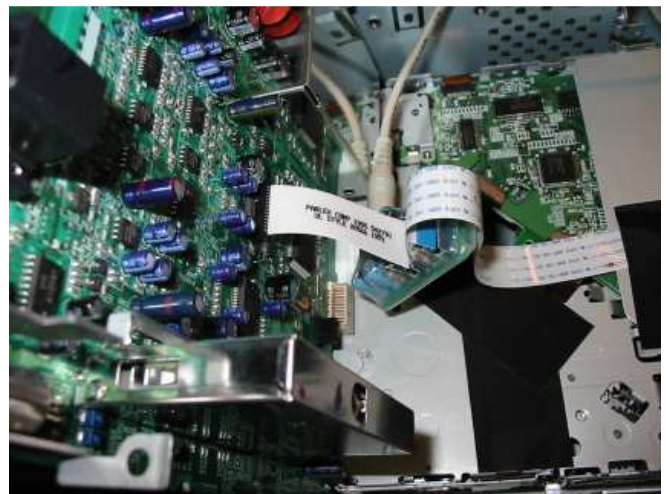
Now the radio is completely disassembled & it's ready to add the accessory board.

CONNECT ACCESSORY BOARD

The first step in connecting the accessory board to the radio is to plug in the ribbon cable from the CD changer. Since the ribbon cables can be inserted in either direction, it's important to align the board correctly before connecting. With no twists or kinks in the ribbon cable, the aux-in port should face the passenger side of the changer; then plug in the cable. In the picture shown, the changer is upside down and the front is facing right.



Next, route the stereo patch cord through the back of the radio. There is not a lot of room for this, so a thin audio cable is definitely a plus.



Once the patch cord is prepared, set the radio & changer + board next to each other. Plug the stereo patch cable into the aux port on the accessory board. **The audio cable should insert completely into the jack on the aux board, clicking securely into place.** Next plug the 2" ribbon cable into the connector on the radio that the CD changer ribbon was removed from earlier. Again, make sure all the ribbon cables are not twisted and the aux port is facing the passenger side of the radio.

Carefully reassemble the CD changer to the radio taking care not to have the board or cables hit anything. Once the CD changer is reinstalled, secure it with the 2 screws removed earlier. Reinstall the top cover and the two screws near the back that hold it in place. Follow with the heatsink and its 7 screws. To reconnect the face plate, it's easiest to start by aligning the bottom and carefully push it back into place until all of the mounting tabs click. Your radio should now be fully reassembled.

TEST THE ACCESSORY BOARD

Now, before you put everything in your car completely back together, test the install by plugging in the white stereo harness plug. You should hear the CD changer start up and count the CD's as soon as you plug it in. Turn the car's electrical's on, plug in an auxiliary sound source, load the silent CD and try it out. If you have any problems, eject the CD, take it back apart and verify you've got the ribbon cable direction correct and the auxiliary patch cord is securely plugged in and not grounding any components on the radio.

Once everything is working perfectly, reassemble following the disassembly instructions in reverse. Don't forget to hook up or appropriately route your new aux-in patch cable to your desired source location. Reinstall all the trim, play the silent CD and you're ready to go!

(Note: If the only CD in the changer is the silent CD, it will repeat indefinitely, automatically.)